

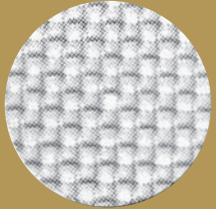
KEEPING FOOD REAL. MAKING LIFE SWEET.®

*Parker*®

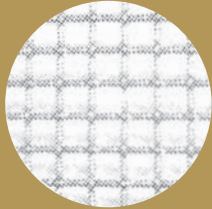
Since 1926

# Product Grind Size Specifier

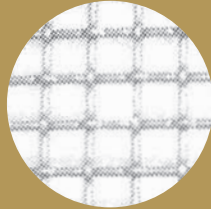
Manufacturers of Candy Particulates & Other Fine Ingredients  
For BAKING & ICE CREAM



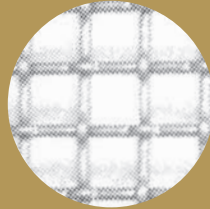
Screen Size #1  
1/16"



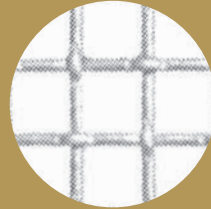
Screen Size #2  
1/8"



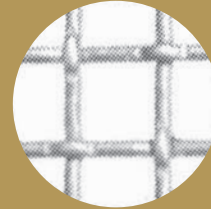
Screen Size #3  
3/16"



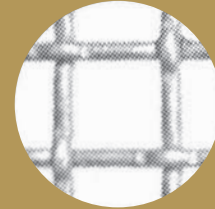
Screen Size #4  
1/4"



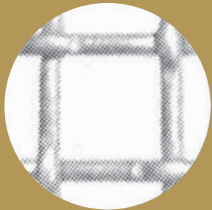
Screen Size #5  
5/16"



Screen Size #6  
3/8"



Screen Size #7  
7/16"



Screen Size #8  
1/2"



Screen Size #9  
9/16"



Screen Size #10  
5/8"



Screen Size #11  
11/16"



Screen Size #12  
3/4"



Screen Size #13  
7/8"



Since 1926

KEEPING FOOD REAL. MAKING LIFE SWEET.®

# Conversion Factor Table

**Decimal Equivalents of Common Fractions**

1/2	.5000	1/10	.1000	3/8	.3750
1/3	.3333	1/16	.0625	3/10	.3000
1/4	.2500	1/32	.0313	4/5	.8000
1/5	.2000	1/64	.0156	5/6	.8333
1/6	.1667	2/3	.6667	5/8	.6250
1/7	.1429	2/5	.4000	7/8	.8750
1/8	.1250	3/4	.7500	7/10	.7000
1/9	.1111	3/5	.6000	9/10	.9000

**To convert Fahrenheit to Celsius (Centigrade), subtract 32 and multiply by 5/9 (.5556)**

**To convert Celsius (Centigrade) to Fahrenheit, multiply by 9/5 (1.8) and add 32.**

<u>To Change:</u>	<u>To:</u>	<u>Multiply by:</u>	<u>To Change:</u>	<u>To:</u>	<u>Multiply by:</u>	<u>To Change:</u>	<u>To:</u>	<u>Multiply by:</u>
centimeters	inches	.3937	liters	pints (dry)	1.8162	pints (liquid)	liters	.4732
centimeters	feet	.03281	liters	pints (liquid)	2.1134	pounds	ounces	16
cubic feet	cubic meters	.0283	liters	quarts (dry)	.9081	quarts (dry)	liters	1.1012
cubic meters	cubic feet	35.3145	liters	quarts (liquid)	1.0567	quarts (liquid)	liters	.9463
cubic meters	cubic yards	1.3079	meters	feet	3.2808	sq. feet	sq. meters	.0929
cubic yards	cubic meters	.7646	meters	miles	.0006214	sq. kilometers	sq. miles	.3861
fathoms	feet	6	meters	yards	1.0936	sq. meters	sq. feet	10.7639
feet	meters	.3048	metric tons	tons (long)	.9842	sq. meters	sq. yards	1.196
feet	miles (naut.)	.0001645	metric tons	tons (short)	1.1023	sq. miles	sq. kilometers	2.59
feet	miles (land)	.0001894	miles	kilometers	1.6093	sq. yards	sq. meters	.8361
feet/second	miles/hour	.6818	miles	feet	5280	tons (long)	metric tons	1.016
gallons	liters	3.7853	miles (naut.)	miles (land)	1.1516	tons (short)	metric tons	.9072
grams	pounds	.002205	miles (land)	miles (naut.)	.8684	tons (long)	pounds	2240
inches	milliliters	25.4	miles/hour	feet/minute	88	tons (short)	pounds	2000
inches	centimeters	2.54	millimeters	inches	.0394	yards	meters	.9144
kilometers	miles	.6214	ounces	pounds	.0625	yards	miles	.0005682
liters	gallons	.2642	pints (dry)	liters	.5506			